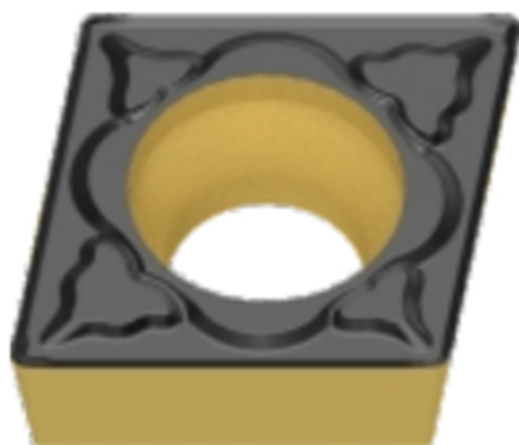


# CCMT060202-PM

## Product Images



## Summary

Features and benefits

- General geometry for semi-finishing applications
- Perfect chip-breaker performance with C type geometry.
- Unique chip design with smooth chip removal capability
- Larger working range makes fewer geometry types
- Sharp cutting edges providing best work performance combine with good wear resistance coat grade

## Content

### Workpiece materials

